

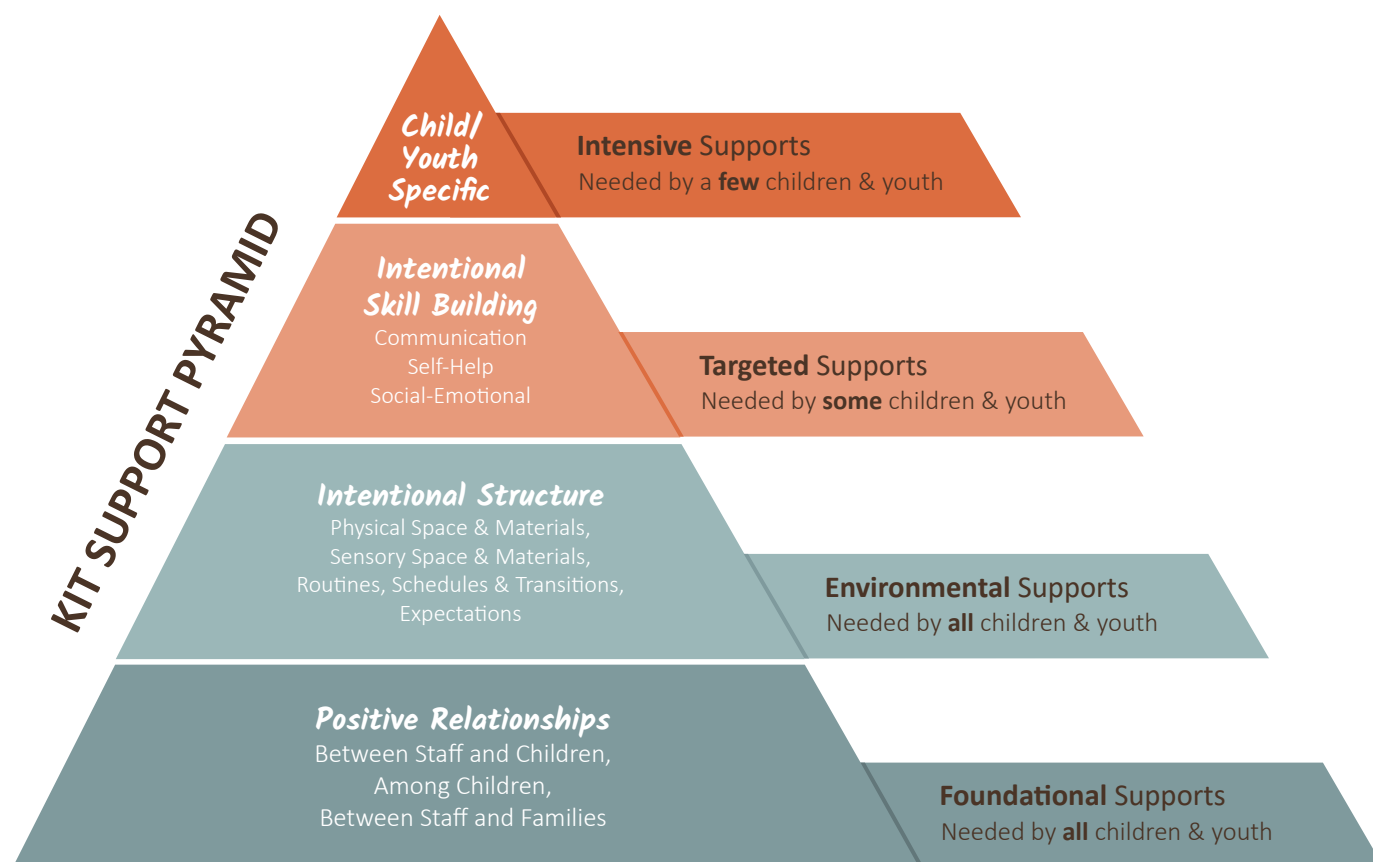


Kids Included Together

Understanding the KIT Support Pyramid

This is a quick guide for understanding the KIT Support Pyramid. Program Leaders can use this Tip Sheet as an outline for staff training or as a self-assessment on how effectively supports for children and youth are being designed. Program Staff can use this resource as a reminder on how to create supports for the children/youth in their care.

Levels of Support: Success in a Group Setting



The KIT pyramid is based on the Pyramid Model for Supporting Social-Emotional Competence developed by the Center on the Social and Emotional Foundations for Early Learning (www.pyramidmodel.org). The CSEFEL model was developed for preschool, and KIT has simplified and broadened it to apply to all ages.

The Pyramid Advantage: The KIT Support Pyramid is a framework for designing supports to help children and youth thrive in their environment. The KIT Support Pyramid is a guide for recognizing the relationship and environmental influences impacting all children and youth in your setting, as well as the social-emotional and individualized needs of specific children and youth. The KIT Support Pyramid helps you build a high-quality program or classroom from the bottom up. When you ensure the bottom levels are solid, only a small number of children/youth will need high-level support.

Examples of Supports at Each Level

Intensive Supports

- Make an individual picture schedule.
- Ask a specific child/youth to engage in a helper task during transitions.

Targeted Supports

- Play games that focus on social skills.
- Facilitate problem-solving.

Environmental Supports

- Designate quiet spaces for 1-2 children/youth to use at a time.
- Prepare everyone for transitions.
- Keep expectations simple and age-appropriate.

Foundational Supports

- Learn the children's and family member's names.
- Use a neutral tone of voice when redirecting.
- Engage with children/youth in activities they enjoy.
- Create opportunities for small group activities.

KIT SUPPORT PYRAMID



REMEMBER Build from the bottom! Starting at the top won't get to the root of the challenge.